

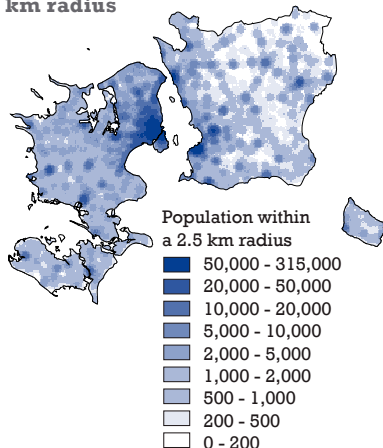
## 2. Population

The Öresund region had approximately 3 732 000 inhabitants at the turn of the year 2009-2010. There are roughly 2 501 000 people living in the Danish part and

1 231 000 in the Swedish part. The population in the Öresund region is concentrated around Öresund with the majority on the Danish side.

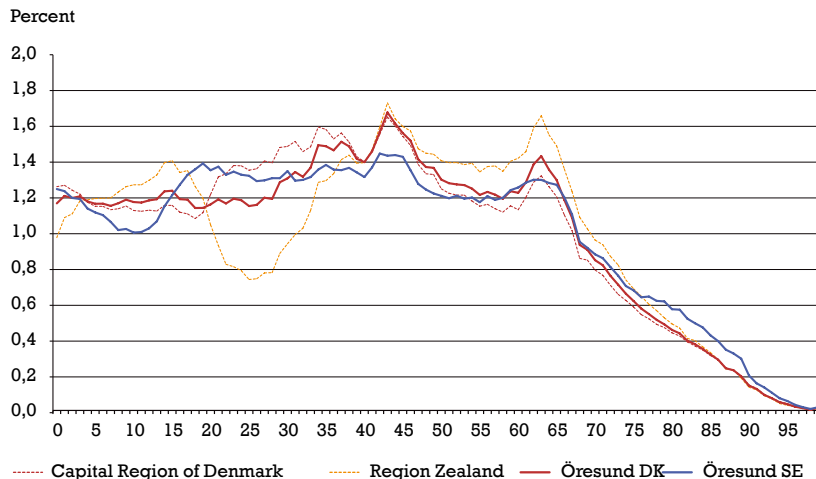
The average age on the Danish side of Öresund region is 39.6 and 40.8 in the Swedish side. Among the younger age groups, there are somewhat more men while in the higher

**Population density**  
Number of inhabitants within a 2.5 km radius



Source: Statistics Denmark and Statistics Sweden  
Map: Region Skåne

**Age structure 2010-01-01**



Source: Statistics Denmark and Statistics Sweden Processed by Region Skåne

age groups there are more women on both sides of Öresund. This is due to more men being born and women living longer.

The age structure on both sides of the Öresund region is quite similar to the structures of the nations. The Danish side of Öresund has a somewhat lower percentage of teenagers and a higher percentage of younger persons aged 25–44 who are gainfully employed than the rest of Denmark on the whole. The Swedish side of Öresund has relatively more young people aged 22–34, but a somewhat lower percentage of persons around ages 50 and 60 than Sweden on the whole.

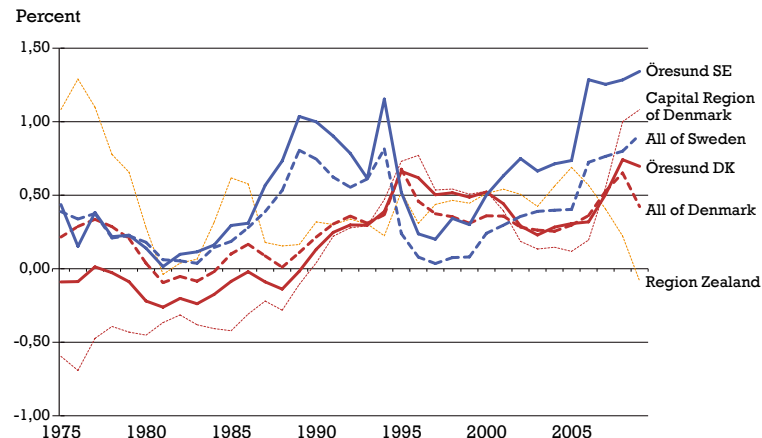
The differences between the regions on the Danish side of Öresund are greater: in Region Zealand the percentage of children and young people is higher, the percentage of young adults is lower, and the percentage of those aged 45–79 is higher than in the Capital Region of Denmark.

### Significant migration to Öresund region in recent years

Population trends in Denmark and Sweden have been fairly similar since the mid-1970s, but at different levels. For many years, the

Swedish side of Öresund has had a stronger population development than Sweden on the whole. On the Danish side of Öresund, population development in relation to the rest of Denmark has varied from year to year.

### Population increase, percent 1975-2009



Source: Statistics Denmark and Statistics Sweden. Processed by Region Skåne

In 2009 the Danish side of the Öresund Region increased by 17 300 inhabitants and the Swedish side by 16 300 inhabitants.

Migration is the prime factor for the population increase of the Öresund region. The general migration pattern is that young people move from home to study or work, and then often prefer the larger cities to experience what city life has to offer in the form of entertainment and activities. After a few years, they start a family with children, move from the cities to settle where there is suitable housing for families with children. However, we see a tendency that families stay with their children in the cities. This may be due to higher prices for houses and a desire to stay in the city. When the children grow up and move from home, many parents move to the city or to a house in the country.

### Öresund's population expected to pass the 4 million mark in 2025

Öresund's population is expected to increase

### Population forecast

	Year	Population 1 January	5-year period	Average annual change		
				Total	Öresund DK	Öresund SE
	1999	3,503,576				
	2004	3,583,302	1999-2003	16,523	10,826	5,697
	2009	3,698,199	2004-2008	18,877	8,024	10,853
<b>Forecast</b>	2014	3,796,371	2009-2013	22,744	8,383	14,361
	2019	3,884,068	2014-2018	17,671	6,290	11,381
	2024	3,971,404	2019-2023	17,507	6,836	10,670
	2029	4,052,226	2024-2028	16,583	6,598	9,985

Source: Statistics Denmark and Region Skåne. Processed by Region Skåne.

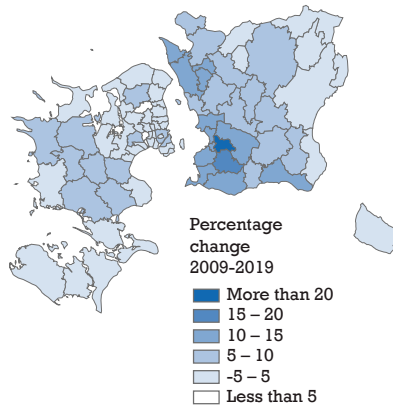
from 3.7 million inhabitants at the start of 2010 to about 4 million inhabitants in 2029. The increase is predicted to be most pronounced in the next ten years.

Population forecasts from 2009 are based on statistics as of 1 January 2009, and after one year, we see that Statistics Denmark misjudged the population development. The Capital Region of Denmark has increased more than expected while the population increase in Region Zealand has been lower than forecasted. The map to the right should therefore be interpreted with caution.

The forecasts for population development in the Öresund region indicate a development where the population increases more dramatically on the Swedish side, while the population on the Danish side increases relatively weakly. The population increase on the Danish side of Öresund is expected to decrease somewhat during the forecast period.

The rate of population increase is also expected to decrease on the Swedish side, but there it starts off at a much higher level. The decrease in Skåne is mostly due to the assumption of reduced refugee and family

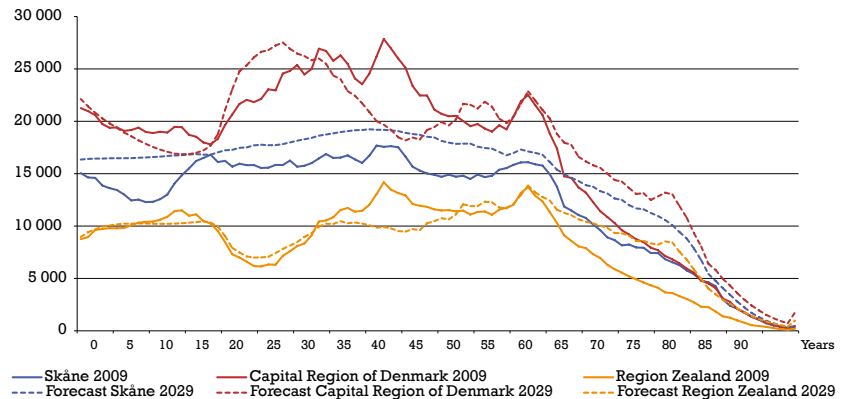
## Forecast of population 2009 – 2019



Source: Statistics Denmark and Region Skåne.  
Map: Region Skåne

member immigration. The reduced increase towards the end of the forecast period is partly due to an aging population and partly due to the long-term and somewhat more cautious projection for Skåne taken at 2019.

## Forecast of population age structure



Source: Statistics Denmark and Region Skåne.  
Processed by Region Skåne

The percentage of elderly is expected to increase in the entire Öresund region. The largest increase is predicted on the Danish side of Öresund. The increase in the percentage of elderly is due to persons born in

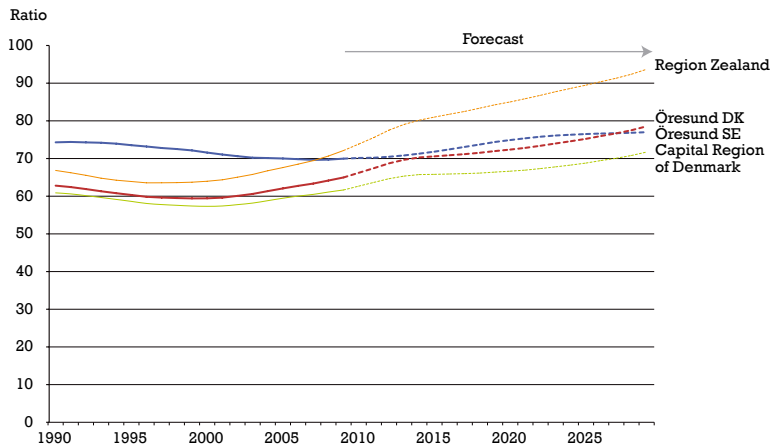
the 1940s comprising a very large group on both sides of Öresund; demographics change sharply when this group becomes older.

The future age structure will influence different sectors of the labour market, such as childcare, schools and care for the elderly. But it will probably also influence the demand for different forms of housing. The change in age structure will affect the economy and can be described in terms of the dependency ratio<sup>1</sup>. In simple terms, the dependency ratio is the number of young and old persons who will be supported by 100 persons in the gainfully employed group aged 20-64. Today Öresund SE has a dependency ratio of 70 persons while Öresund DK has a ratio of 65 persons.

Up until 2029, the population aged 20-64 is expected to drop by about 40 000 persons, while the population in Öresund SE is expected to rise by about 90 000 persons in the same age group. However, both sides of Öresund will have an increasing dependency

<sup>1</sup>The dependency ratio is calculated as the total number of persons age 0-19 and the number of persons aged 65 and older divided by the number of persons aged 20-64, multiplied by 100.

### Dependency ratio 1990-2029



Source: Statistics Denmark and Statistics Sweden Region Skåne. Processed by Region Skåne

ratio, because Öresund SE has an increase for other age groups that is even quicker than the increase of the gainfully employed population.